



Advanced Radio Settings

Changing your advanced settings can prevent communication problems due to interference from other wireless devices such as wireless phones, other wireless WeatherHawk stations, or spread spectrum radios. The procedure for changing these values follows:

1. You should only make advanced radio setting changes with a direct connection to the WeatherHawk. Therefore, connect the serial cable male connector to the WeatherHawk RS-232 port and the female connector to a computer serial port.
2. Start Virtual Weather Station software.
3. Click on the *Settings* drop down menu.
4. Click on the *WeatherHawk Settings* menu.
5. Click on the *Advanced Program* button (Figure 1).
6. Click on *Open Port* (1 of Figure 2).
7. Click on *Read Settings* button to display current settings (2 of Figure 2).
8. Change the *Radio Address*, *Radio Net Address*, and/or *Radio Hop Sequence* settings (3 of Figure 2). Record these new settings because you'll need them for step 14.
9. Click on *Save Settings* button (4 on Figure 2). This saves the new settings in the WeatherHawk's internal radio.
10. Click on the *RF4XX Radio Settings* Tab (5 on Figure 2).
11. Disconnect the serial cable from the WeatherHawk station.
12. Connect the serial cable male connector to the radio port labeled RS232. The other end of the serial cable should still be connected to the computer.

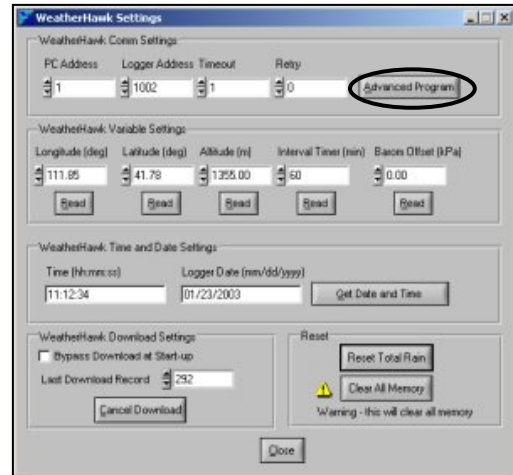


Figure 1: WeatherHawk Settings Screen. Advanced Program button is circled.

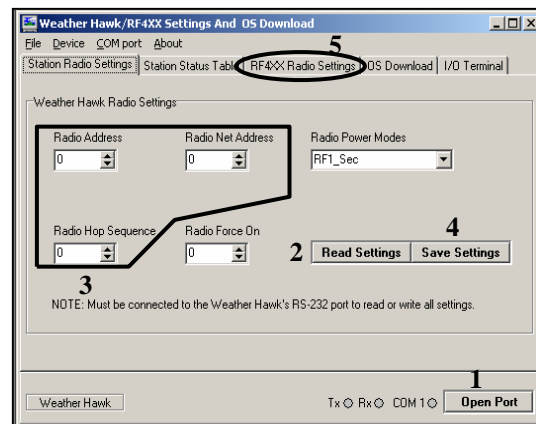


Figure 2: Station Radio Settings screen. The settings entered in this screen are downloaded to the WeatherHawk station's internal radio when the Save Settings button is selected.

13. Follow the instructions in the large white box provided on the RF4XX Radio Settings screen (1 on Figure 3).
14. Set the *Radio Address*, *Radio Net Address*, and *Radio Hop Sequence* to the settings entered in step 8 (2 on Figure 3).



Wireless communications require the Radio Address, Radio Net Address, and Radio Hop Sequence to be set the same for the WeatherHawk internal radio and the RF400-series radio (i.e., the values set in step 14 must equal the values set in step 8).

15. Ensure that the *Predefined Settings* is RF on 1 Sec LH (3 on Figure 3). This is the default setting.
16. Click on the *Set Settings* button (4 on Figure 3). This saves the new settings in the RF400 radio.

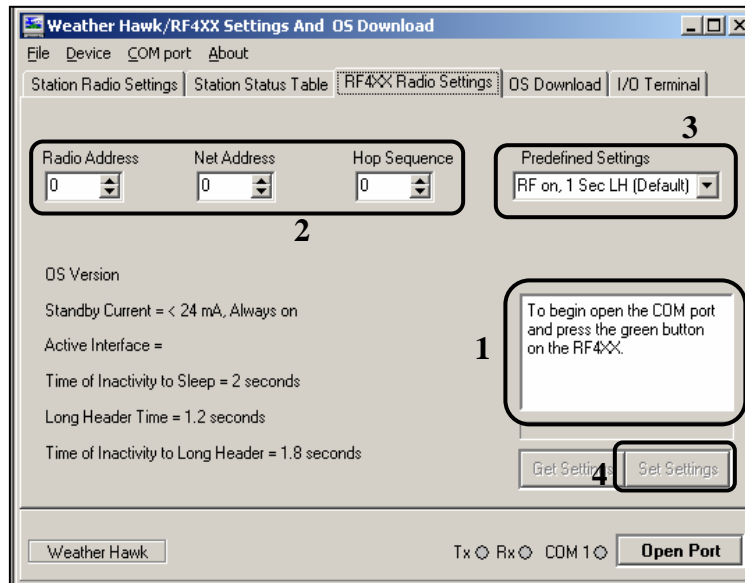


Figure 3: RF4XX Radio Settings screen. The settings entered here are downloaded to the RF400-series radio when the Set Settings button is selected. The values set for the Radio Address, Net Address, and Hop Sequence must equal the values that were set in the Station Radio Settings screen.



If you are experiencing problems communicating, contact the WeatherHawk Customer Service.